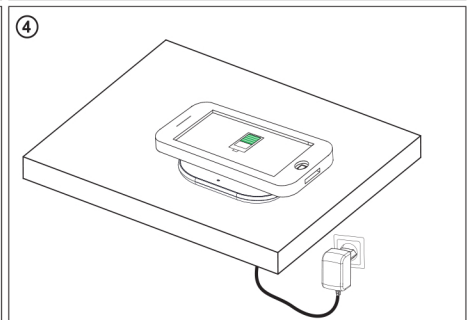
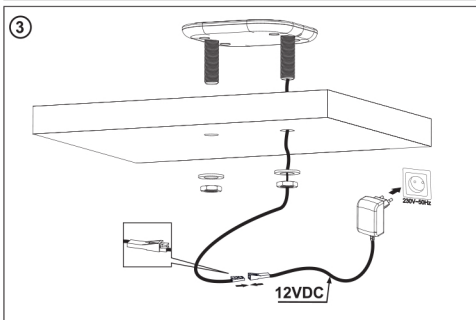
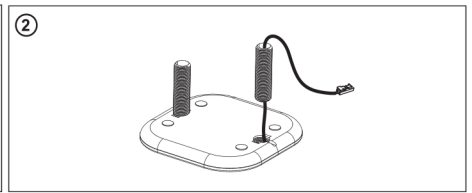
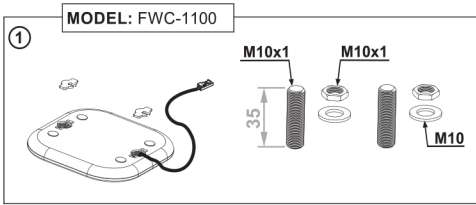


WIRELESS CHARGER / FWC-1100 (screw)

10.05.13/FWC-1100



INPUT: 12VDC
OUTPUT: 5V-1A

Charging standard: Qi WPC V1.4.2

Recommended power of the power supply unit: 15W

Maximum energy consumption of the charger: 1.25 A

Maximum power of the charger: 5 W (5 V 1 A) / 7.5 W for Iphone / 10 W for Samsung

